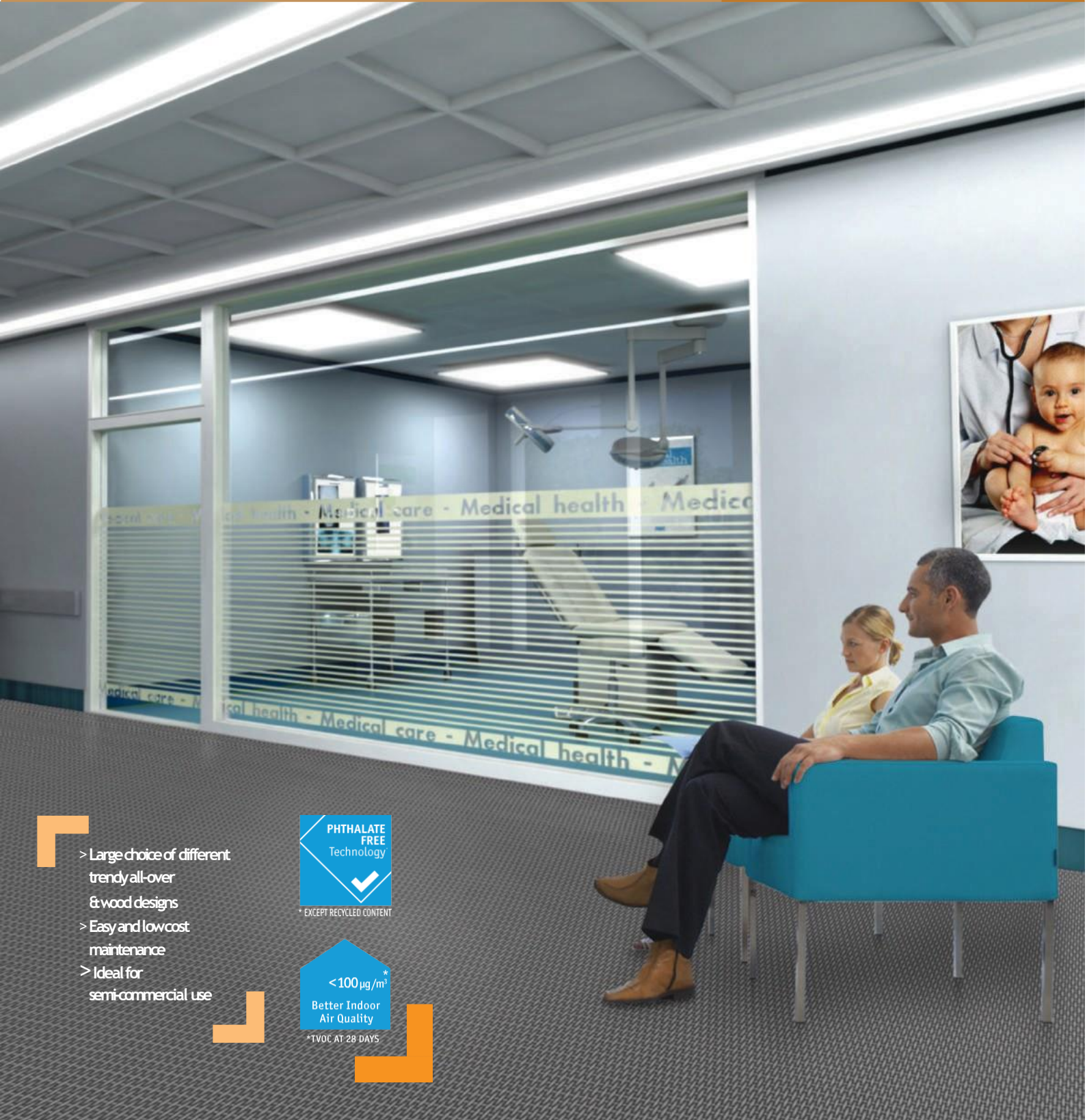


Acczent Classic 40

2017 - 2018

HETEROGENEOUS COMPACT VINYL



- > Large choice of different trendy all-over & wood designs
- > Easy and low cost maintenance
- > Ideal for semi-commercial use



* EXCEPT RECYCLED CONTENT



*TVOC AT 28 DAYS

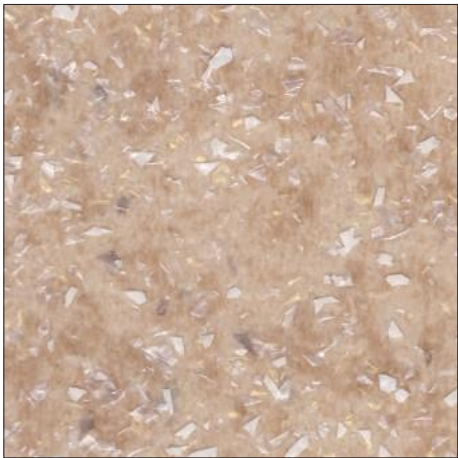


HETEROGENEOUS
COMPACT VINYL

Acczent Classic 40

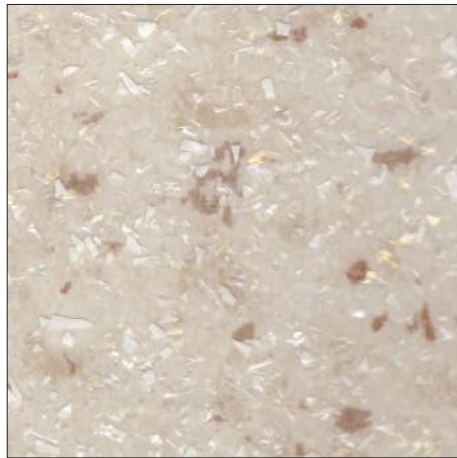


Moda



5708 008

Beige Red



5708 015

Soft Beige



5708 013

White



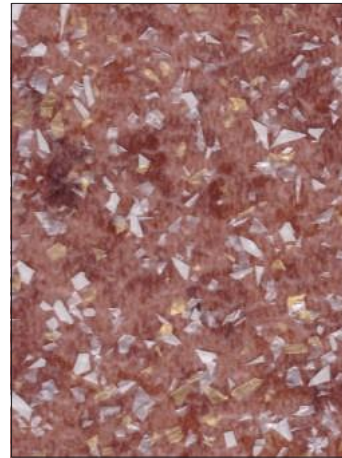
5708 002

Light Grey



5708 006

Blue



5708 005

Red



5708 007

Green

Techvision



27000 001

Metallic



27000 002

Dark Grey



27000 003

Gold

HETEROGENEOUS
COMPACTVINYL

Acczent Classic 40

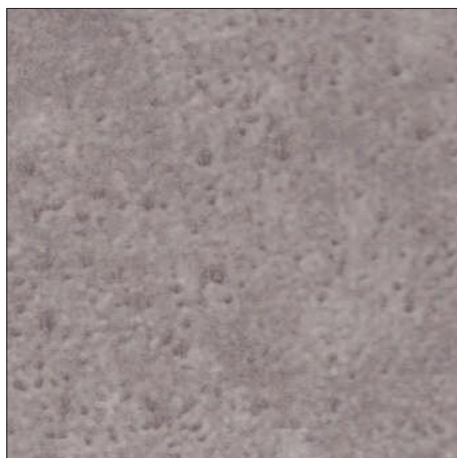


Rock



5618 **026**

Snow Beige



5618 **020**

Grey Black

Antia



5618 **011**

Black

Wood



5618 **006**

Beige Yellow



5618 **002**

Dark Beige



5618 **028**

Light Natural



5618 **005**

Brown



5618 **003**

Light Brown



5618 **025**

Light Warm Brown

HETEROGENEOUS
COMPACT VINYL

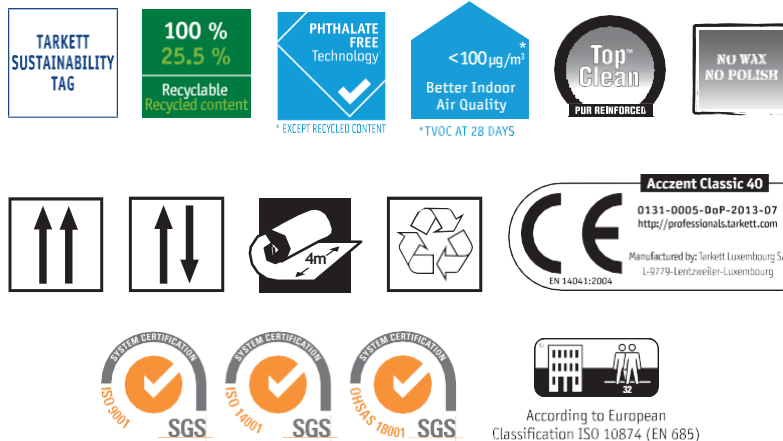
Accent Classic 40

Specification

Inlaid compact vinyl flooring on a glass fiber stabilizer carrier, filler free wear layer. PU reinforcement.
Product Standard EN 649

Our Sustainability tag explains the content of our products and how they contribute to our sustainability strategy and human well-being.

CERTIFICATION & CLASSIFICATION	STANDARDS	Accent Classic 40
Type of floorcovering	ISO 10582 - EN 649	Heterogeneous compact vinyl
CE certification	EN 14041	Yes
Classification	ISO 10874 - EN 685	Commercial: 32
TECHNICAL CHARACTERISTICS	STANDARDS	Accent Classic 40
Wear layer thickness	ISO 24340 - EN 429	0.40mm
Surface treatment		TopClean
Total thickness	ISO 24346 - EN 428	2.0 mm
Total weight g/m ²	ISO 23997 - EN 430	2150
Form of delivery	ISO 24341 - EN 426	Sheet (rolls)
		approx. 25 running metres x 4 m
TECHNICAL PERFORMANCES	STANDARDS	Accent Classic 40
Dimensional stability	ISO 23999 - EN 434	≤ 0.40%
Reaction to fire	EN 13501-1	B _{fl} s1 glued over any A2 _{fl} or A1 _{fl} substrate (concrete) and over any derivative wood substrate
Abrasion group	EN 660-2	Group T: ≤ 2 mm ³
Impact sound reduction	ISO 717-2 - ISO 140-8	13 dB
Static indentation	ISO 24343-1 - EN 433	≤ 0.10 mm
Castor chair	ISO 4918 - EN 425	No damage
Curl resultant to heat	ISO 23999 - EN 434	≤ 8 mm
Total VOC emissions	AgBB/DIBt	≤ 100 µg/m ³ (after 28 days)
Electrostatic properties	EN 1815 EN 1081	≤ 2 kV on concrete R1 < 10 ¹⁰ Ω
Thermal resistance Underfloor heating	EN 12524	0.02 m ² K/W Suitable
Light fastness	EN ISO 105-B02	≥ 6
Chemical resistance	ISO 26987 - EN 423	High resistance
Hygiene		Does not contribute to infection spreading
Slip resistance	DIN 51130 EN 13893	R10 ≥ 0.3 µ
Colours		19 (Wood: 6 - Rock: 2 - Antia: 1 - Moda: 7 - Technivision: 3)



Optional welding rods by order:

Colors N°	Welding Rod N°	Colors N°	Welding Rod N°
5708 008	1294 852	5618 026	1287 078
5708 015	1292 465	5618 020	1287 591
5708 013	1288 218	5618 011	1287 585
5708 002	1287 337	5618 006	1287 318
5708 006	1288 308	5618 002	1291 451
5708 005	1288 387	5618 028	1287 046
5708 007	1292 158	5618 005	1287 287
27000 001	1287 532	5618 003	1294 315
27000 002	1278 457	5618 025	1287 402
27000 003	1287 501		